



Fagen Friedman & Fulfrost LLP

# Public Hearing Comments in Advance of Preparing Trustee Area Map Options



Jonathan Salt, F3  
Larry Ferchaw, Cooperative Strategies  
December 11, 2018

[F3law.com](http://F3law.com)

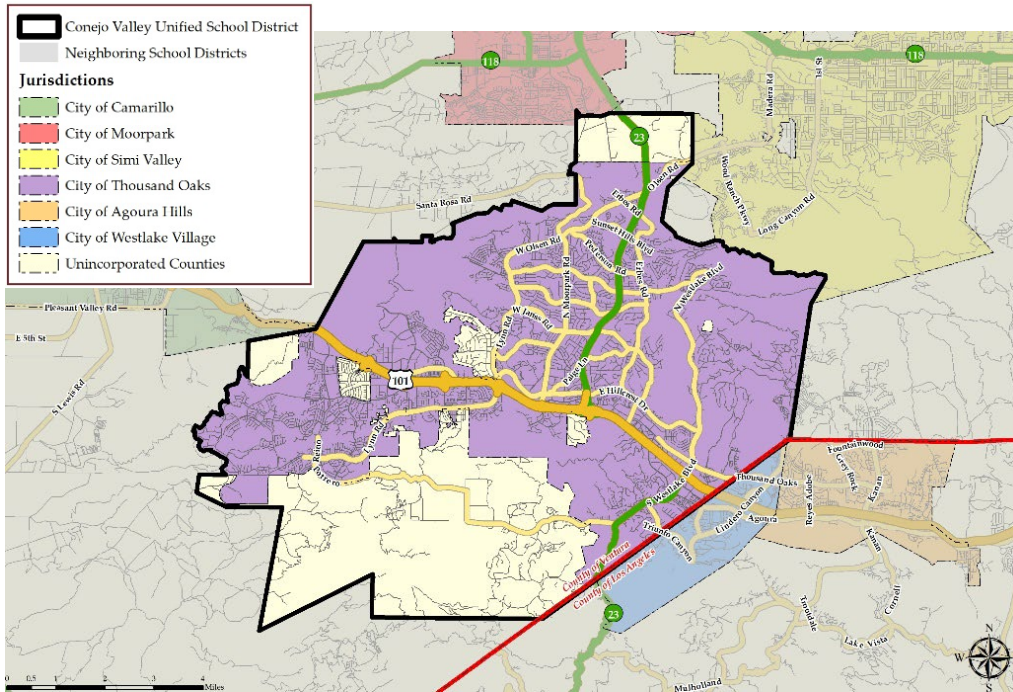
# Current Step: Two Public Hearings

- Prior to the preparation of draft trustee voting area plans by the District's demographer
- Receive community comments and public testimony concerning:
  - The composition of potential trustee voting areas associated with the District's transition to a by-trustee area election system



# District's Demographics

## Total Population



Population	Total Population		Age 18 and over	
	Total	%	Total	%
Hispanic/Latino	22,2607	16.73%	15,332	14.88%
White	95,365	70.59%	75,460	73.26%
Black/ African American	1,566	1.16%	1,200	1.16%
American Indian/ Alaska Native	245	0.18%	189	0.18%
Asian	11,354	8.40%	8,773	8.52%
Native Hawaiian/ Pacific Islander	137	0.10%	116	0.11%
Other	281	0.21%	163	0.16%
Two or More Races	3,540	2.62%	1,772	1.72%
<b>Total Population</b>	<b>135,095</b>	<b>100.00%</b>	<b>103,005</b>	<b>100.00%</b>



# District's Demographics

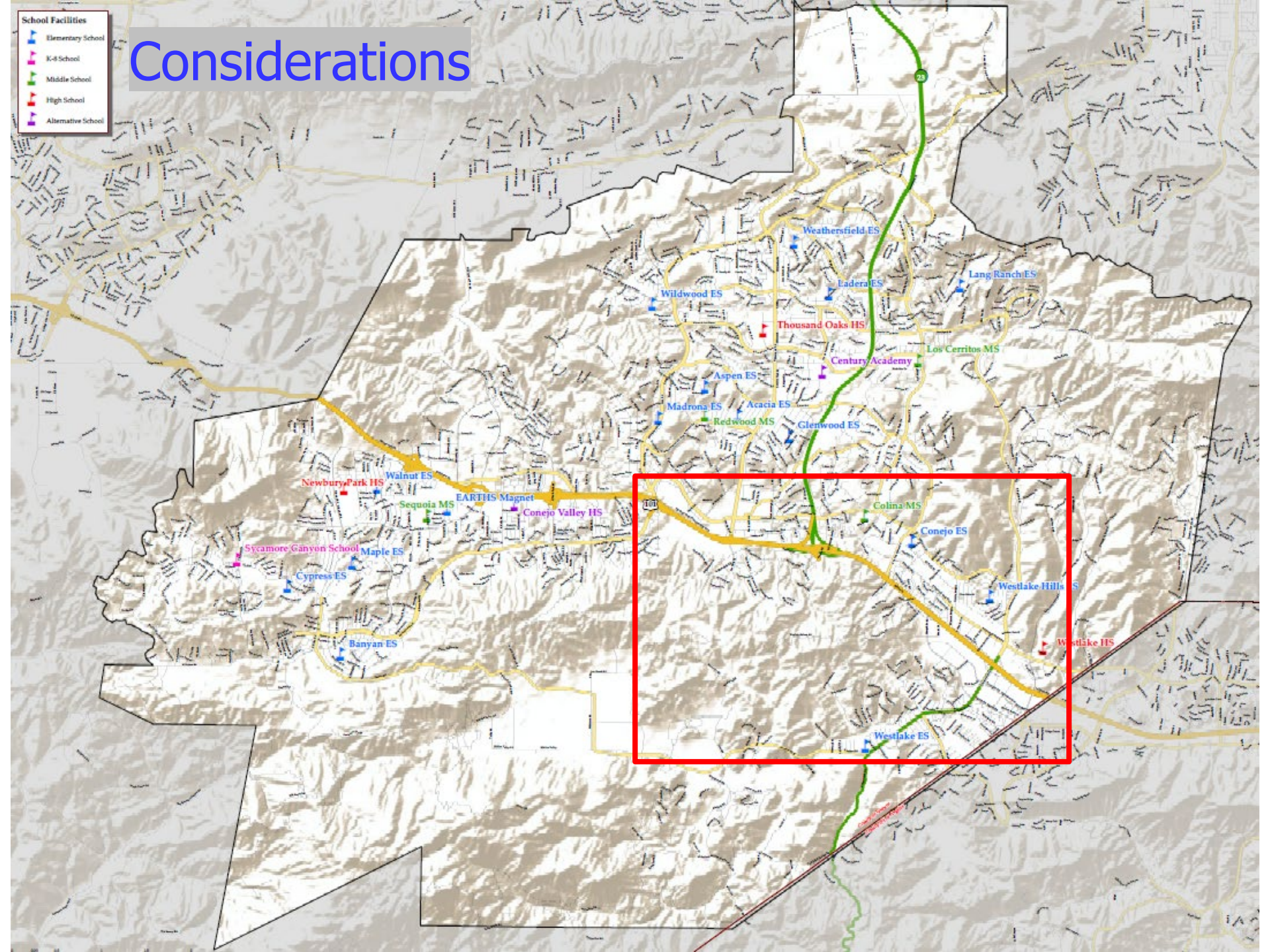
## CVAP

Population	2012-2016 CVAP	
	Total	%
Hispanic/Latino	11,282	11.83%
White	74,283	77.89%
Black/ African American	918	0.96%
American Indian/ Alaska Native	134	0.14%
Asian	6,947	7.28%
Native Hawaiian/ Pacific Islander	99	0.10%
Two or More Races	1,705	1.79%
<b>Total Population</b>	<b>95,368</b>	<b>100.00%</b>



# Considerations

- School Facilities**
- Elementary School
  - K-4 School
  - Middle School
  - High School
  - Alternative School





# Considerations

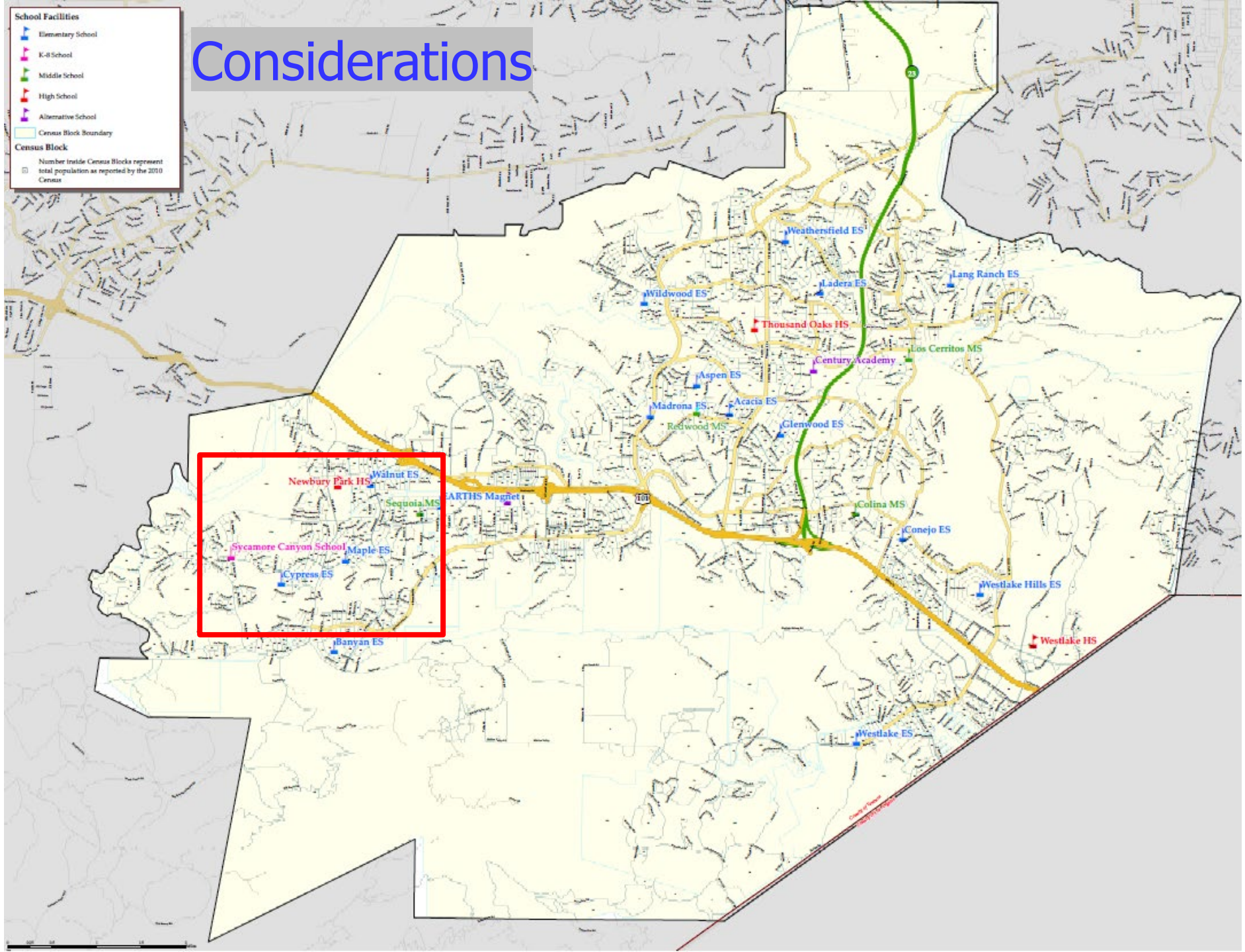
**School Facilities**

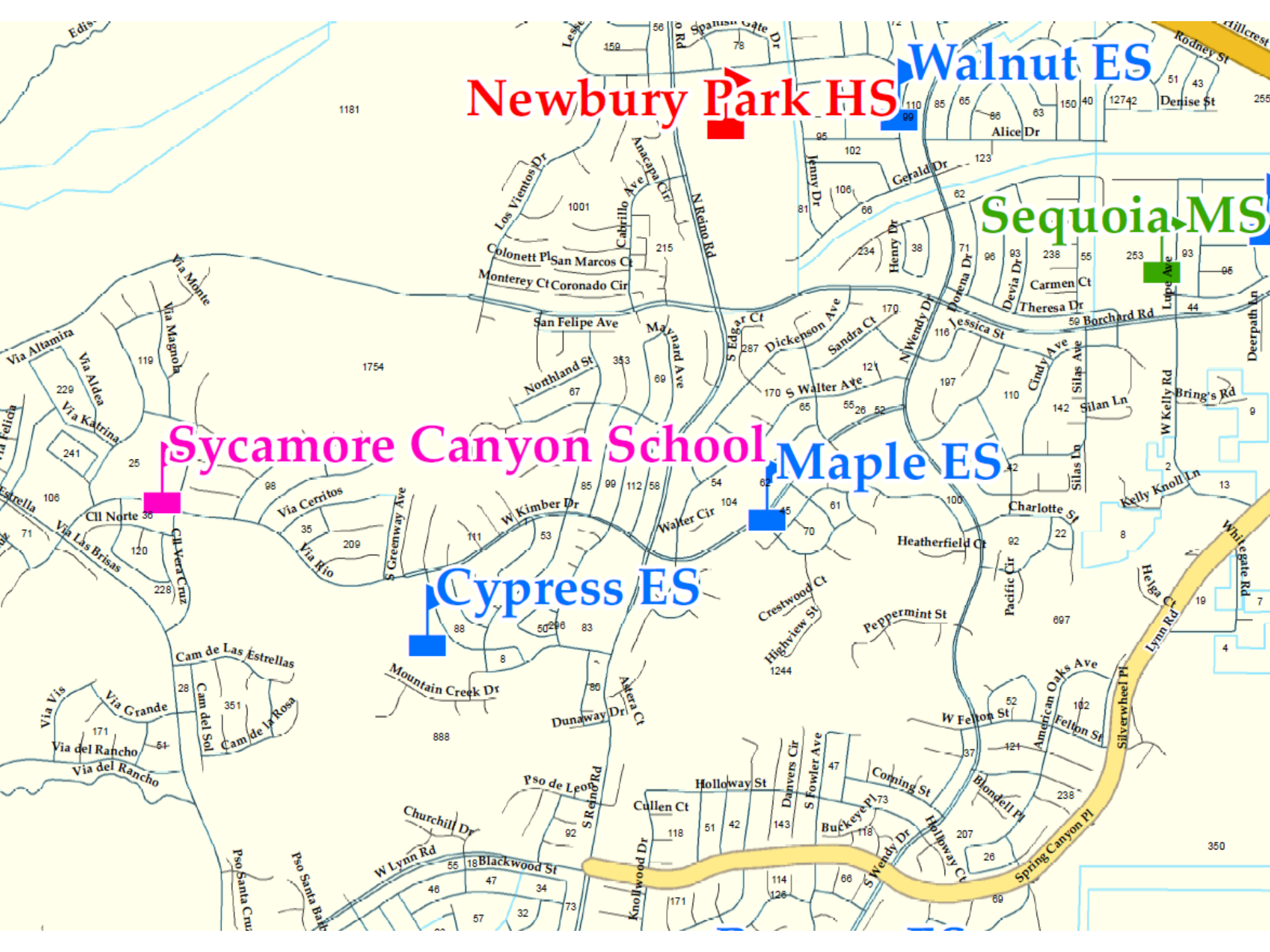
- Elementary School
- K-8 School
- Middle School
- High School
- Alternative School

**Census Block Boundary**

**Census Block**

Number inside Census Blocks represent total population as reported by the 2010 Census





Newbury Park HS

Walnut ES

Sequoia MS

Sycamore Canyon School

Maple ES

Cypress ES

1181

1754

350



# Considerations

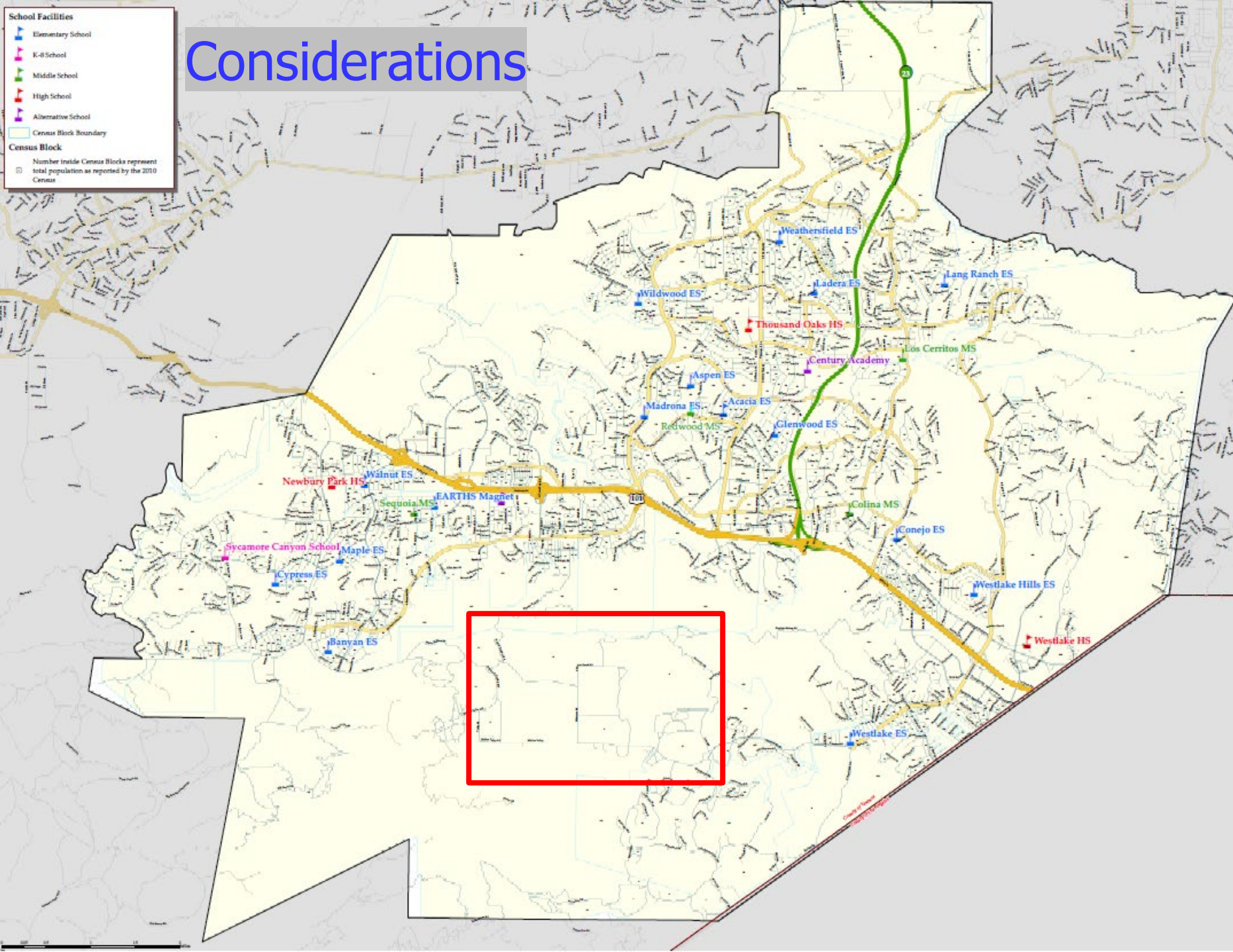
**School Facilities**

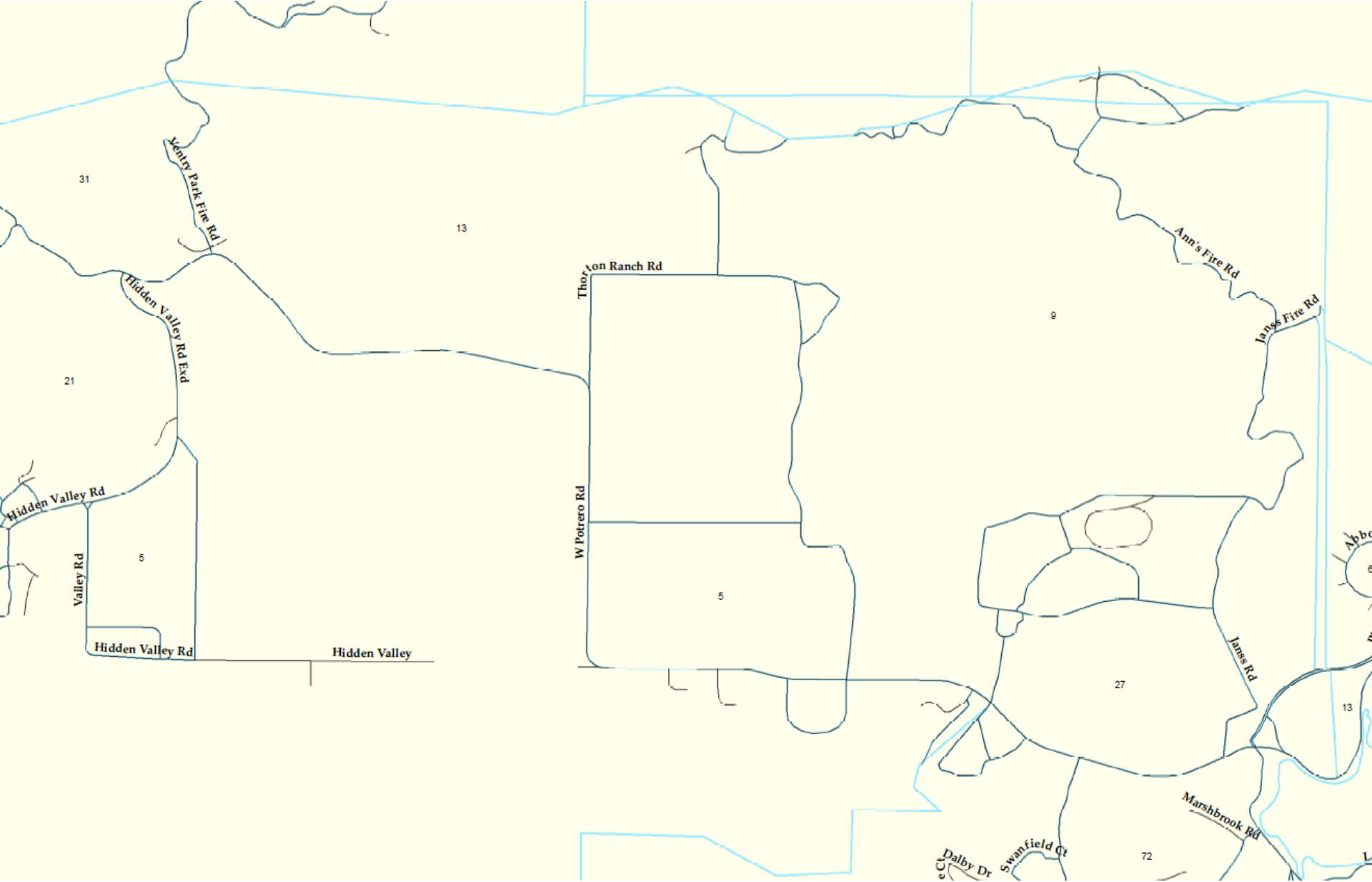
- Elementary School
- K-8 School
- Middle School
- High School
- Alternative School

**Census Block Boundary**

**Census Block**

Number inside Census Blocks represent total population as reported by the 2010 Census





# Considerations

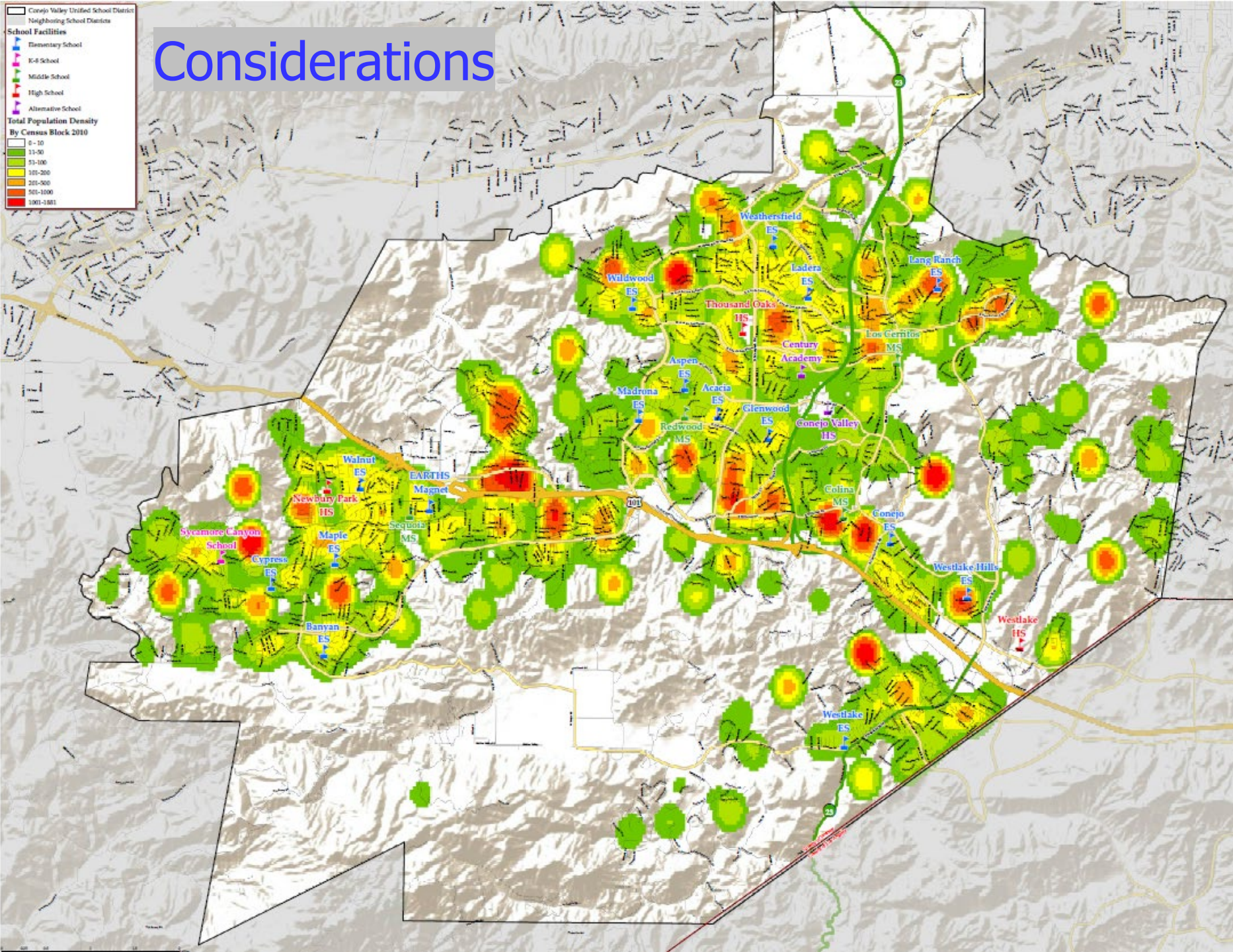
Conejo Valley Unified School District  
Neighboring School Districts

**School Facilities**

- Elementary School
- K-4 School
- Middle School
- High School
- Alternative School

**Total Population Density  
By Census Block 2010**

- 0-10
- 11-50
- 51-100
- 101-200
- 201-500
- 501-1000
- 1001-1001



# Considerations

**School Facilities**

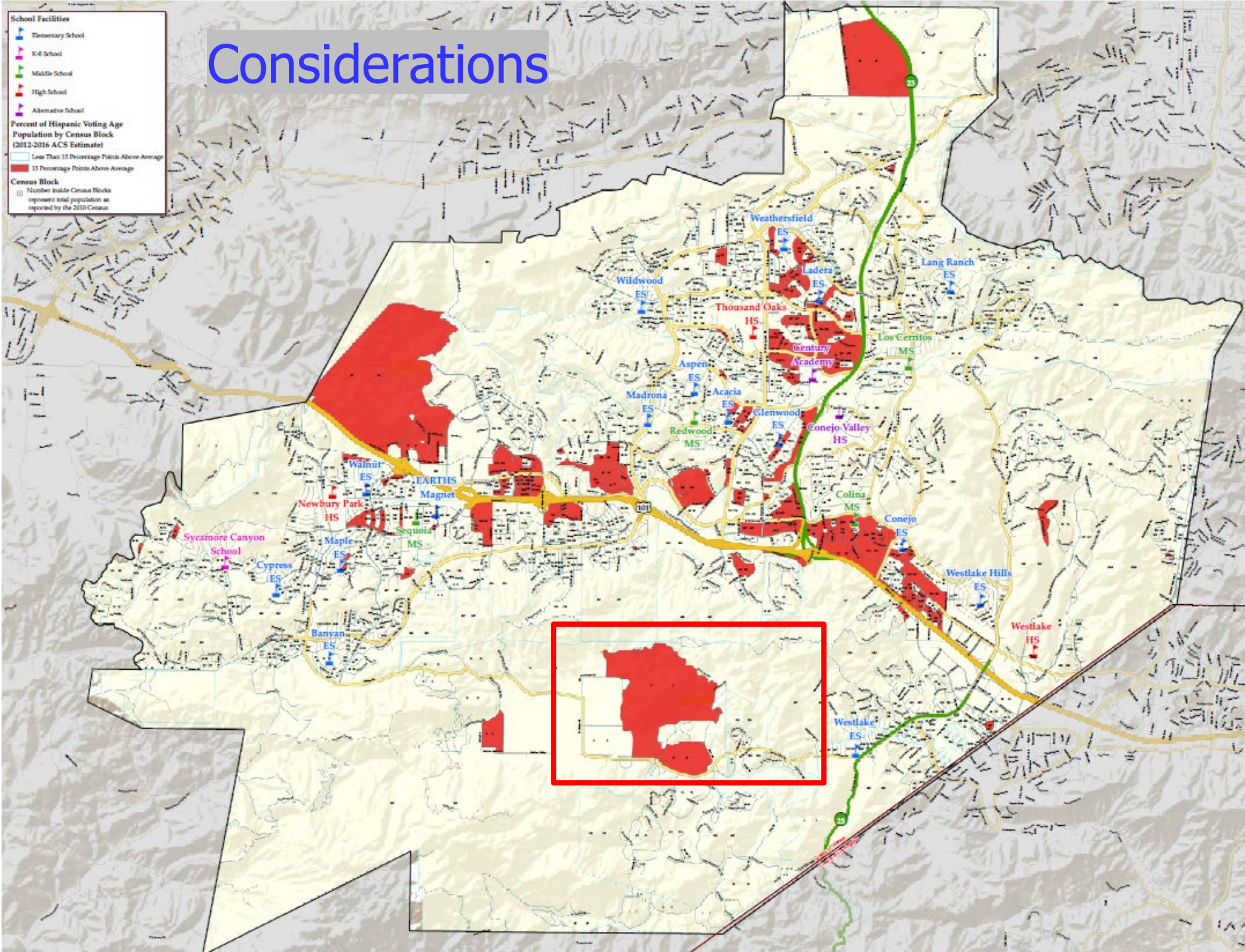
- Elementary School
- K-8 School
- Middle School
- High School
- Alternative School

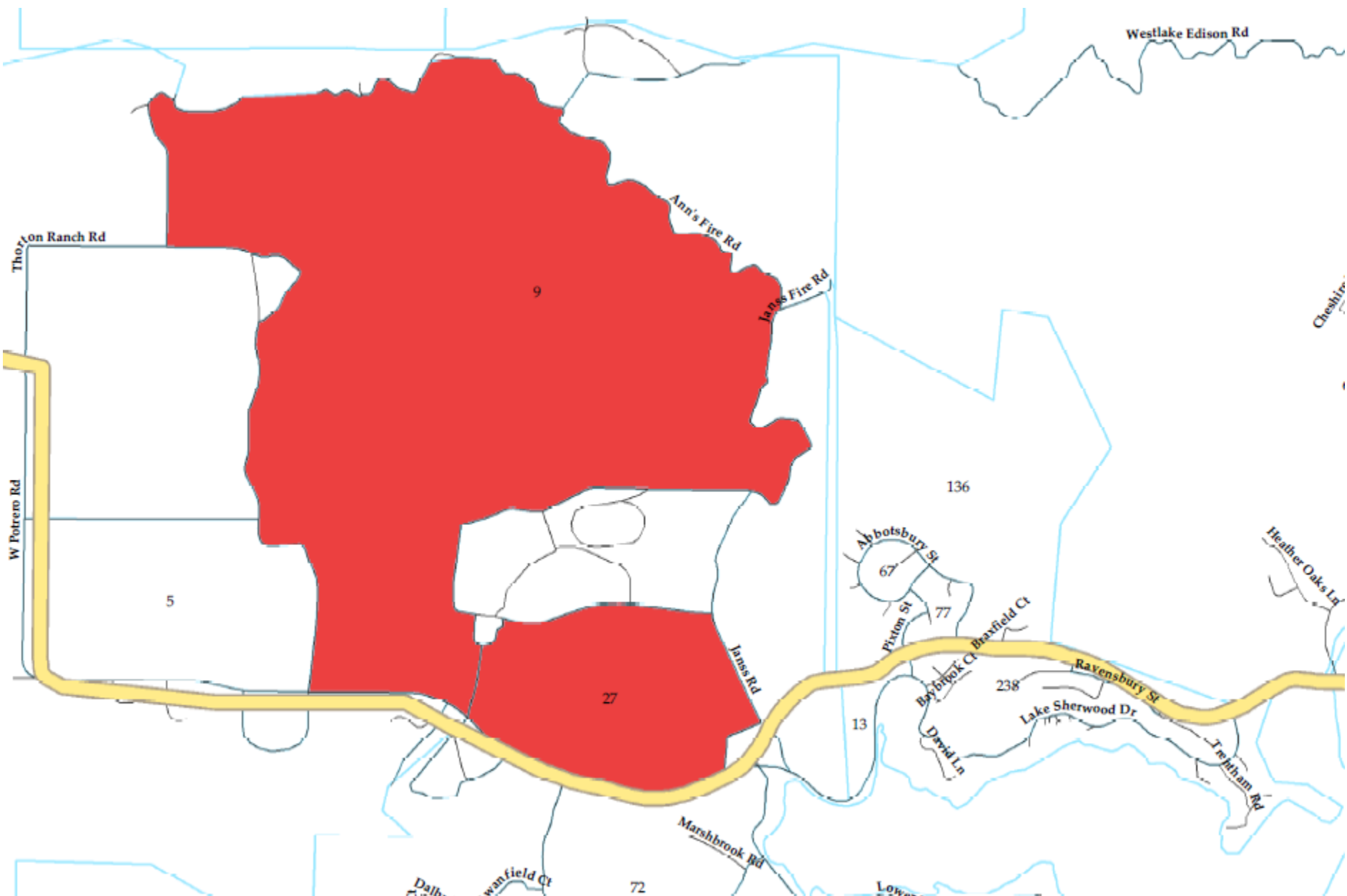
**Percent of Hispanic Voting Age Population by Census Block (2012-2016 ACS Estimate)**

- Less Than 15 Percentage Points Above Average
- 15 Percentage Points Above Average

**Census Block**

(1) Number inside Census Block represents total population as reported by the 2010 Census





# Considerations

**School Facilities**

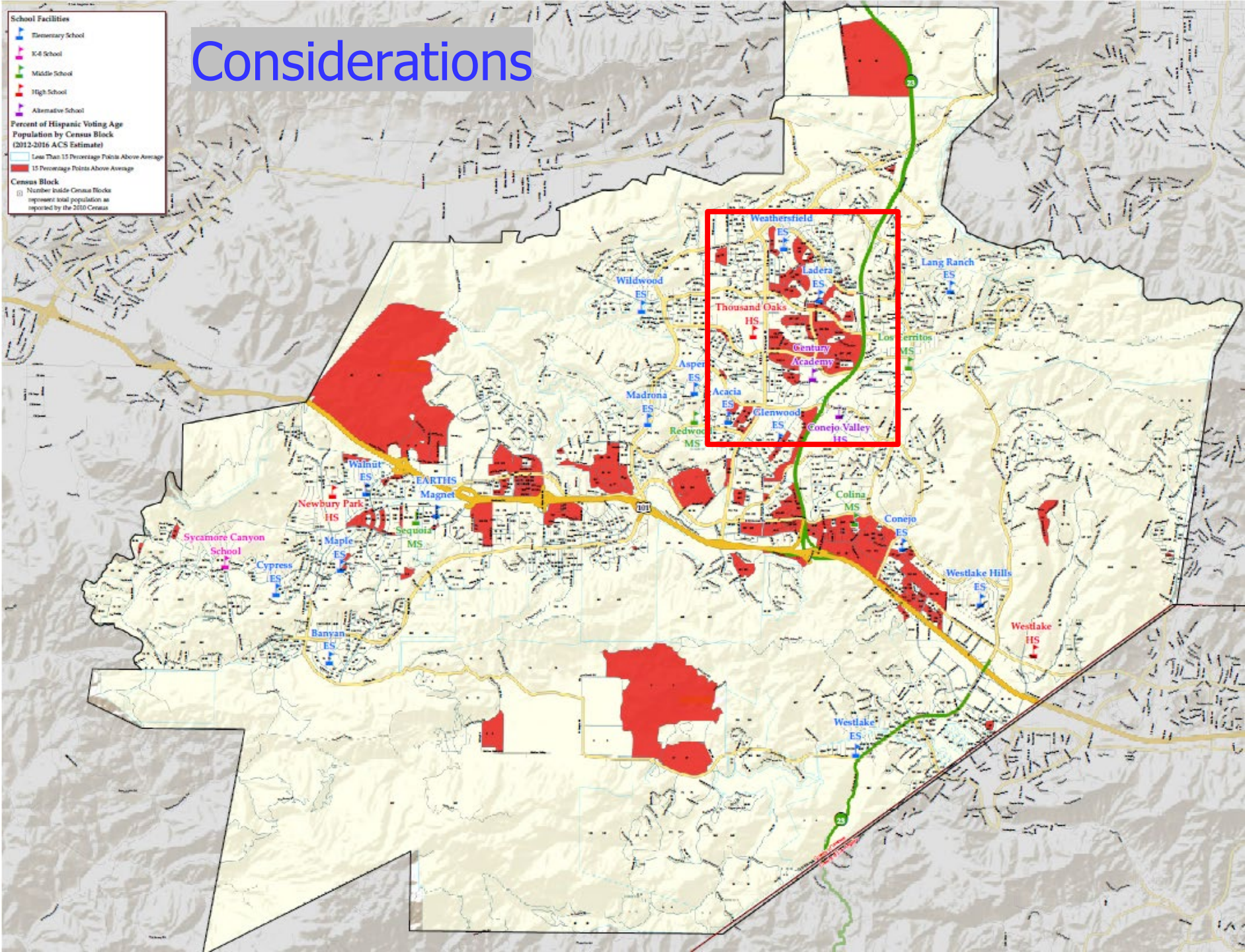
- Elementary School
- K-8 School
- Middle School
- High School
- Alternative School

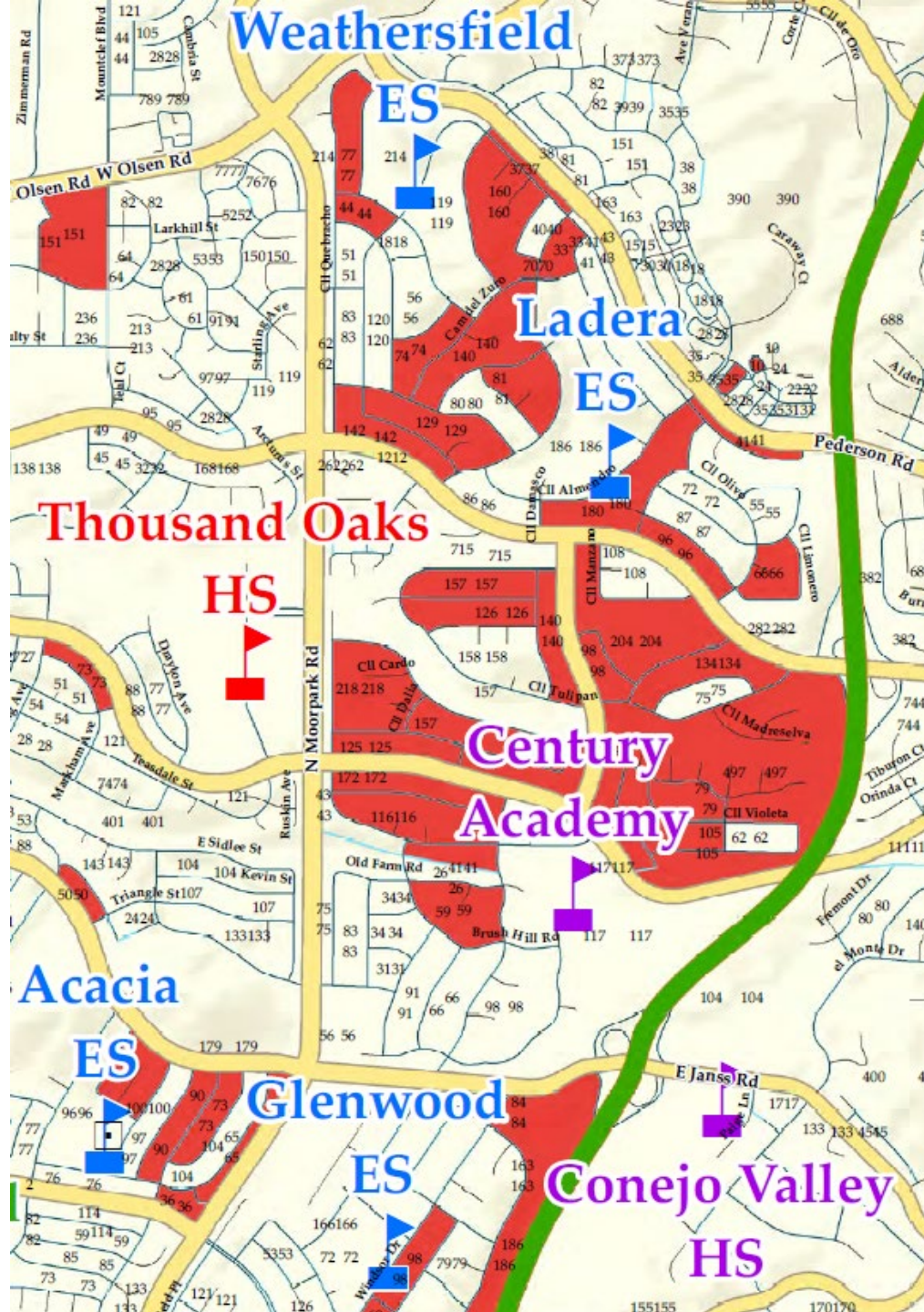
**Percent of Hispanic Voting Age Population by Census Block (2012-2016 ACS Estimate)**

- Less Than 15 Percentage Points Above Average
- 15 Percentage Points Above Average

**Census Block**

(1) Number inside Census Block represents total population as reported by the 2010 Census





# Considerations

**School Facilities**

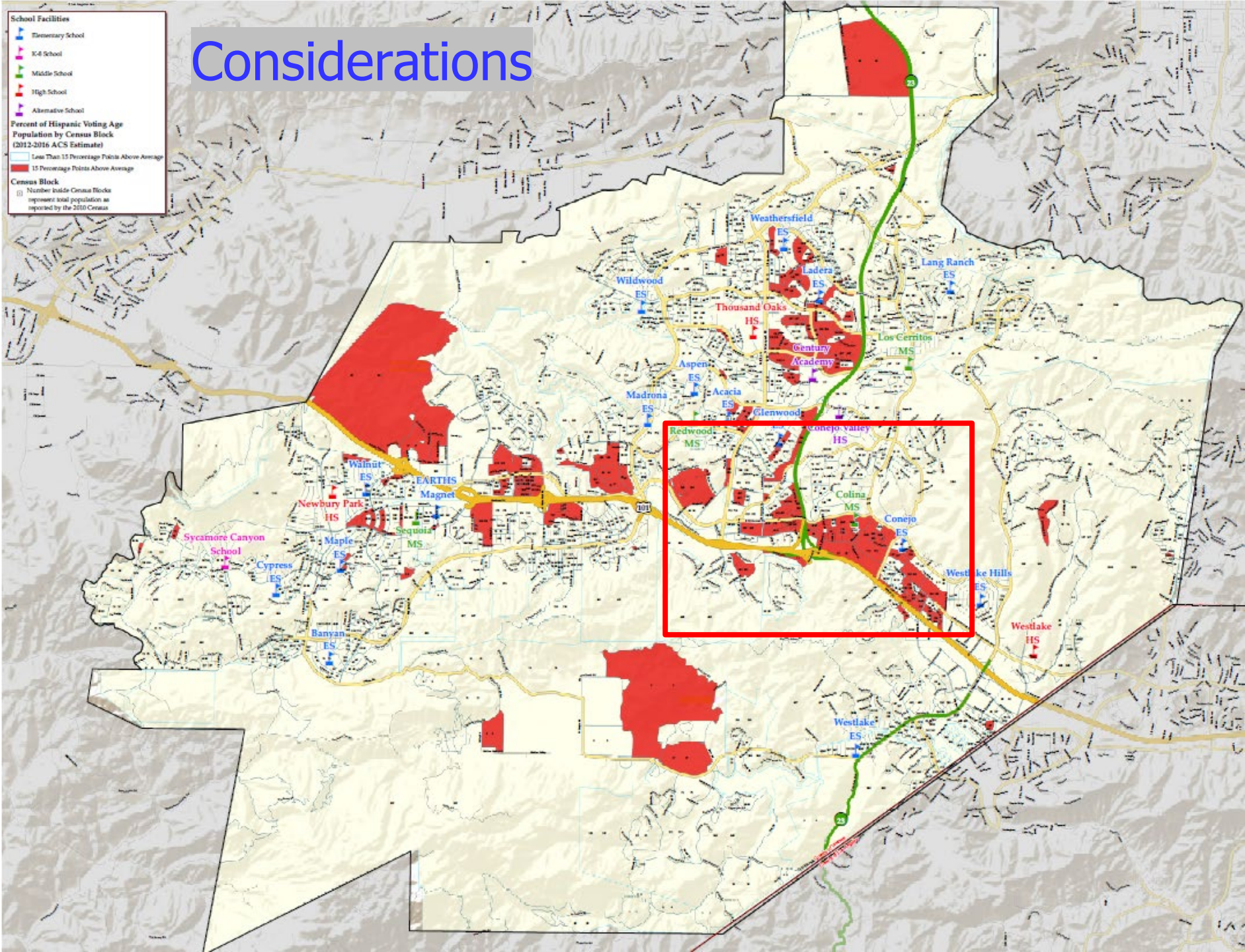
- Elementary School
- K-8 School
- Middle School
- High School
- Alternative School

**Percent of Hispanic Voting Age Population by Census Block (2012-2016 ACS Estimate)**

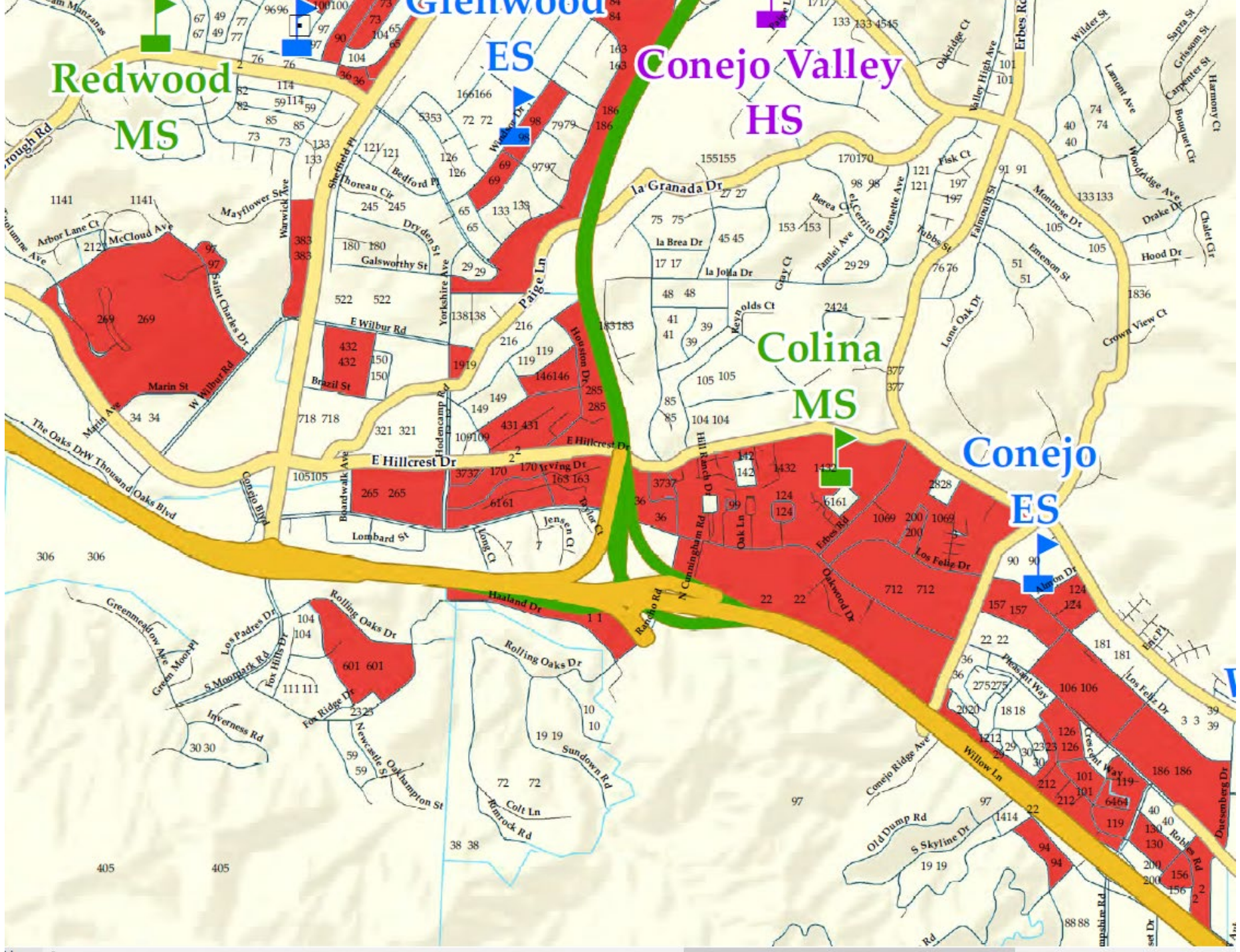
- Less Than 15 Percentage Points Above Average
- 15 Percentage Points Above Average

**Census Block**

(1) Number inside Census Block represents total population as reported by the 2010 Census







**Redwood  
MS**

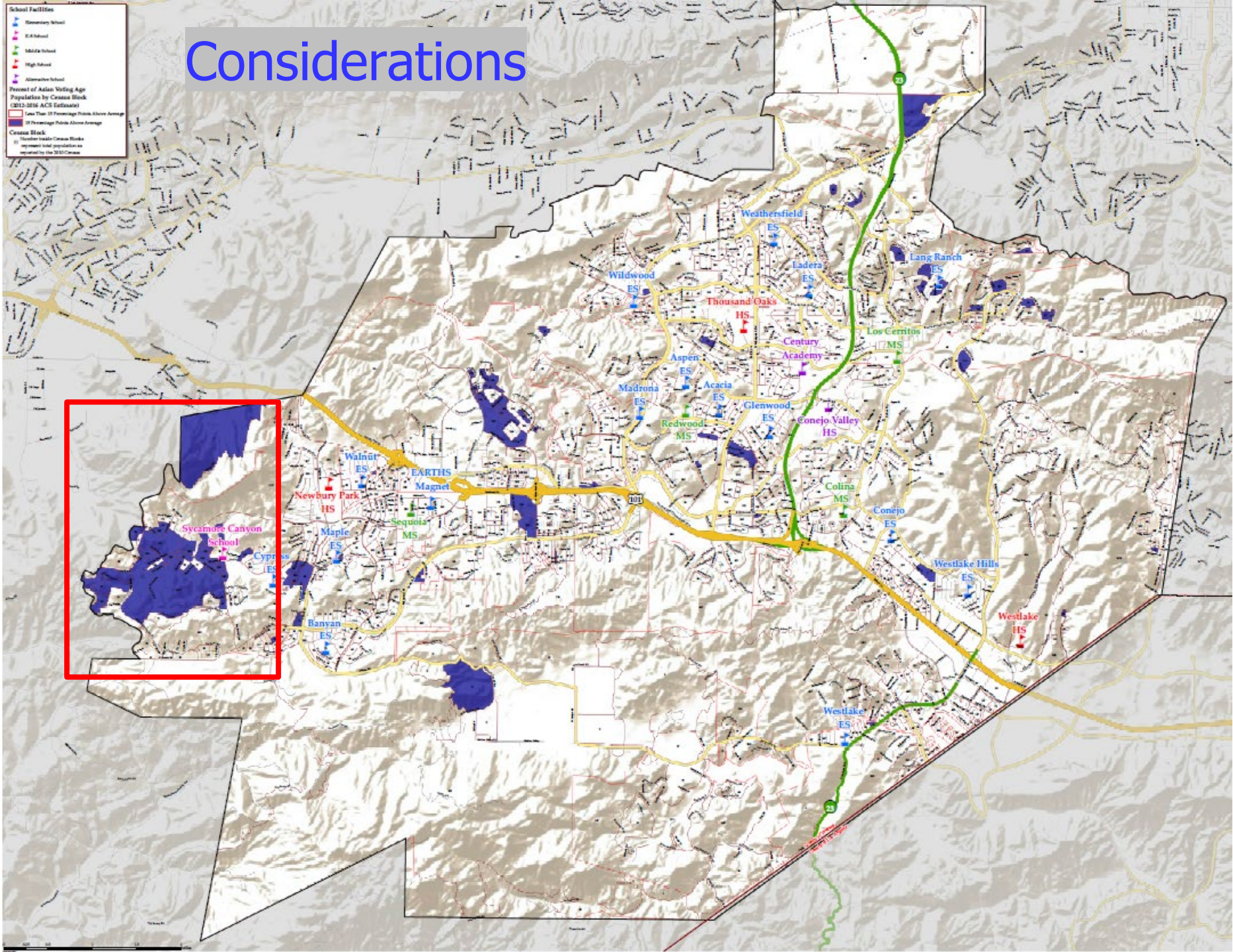
**ES**

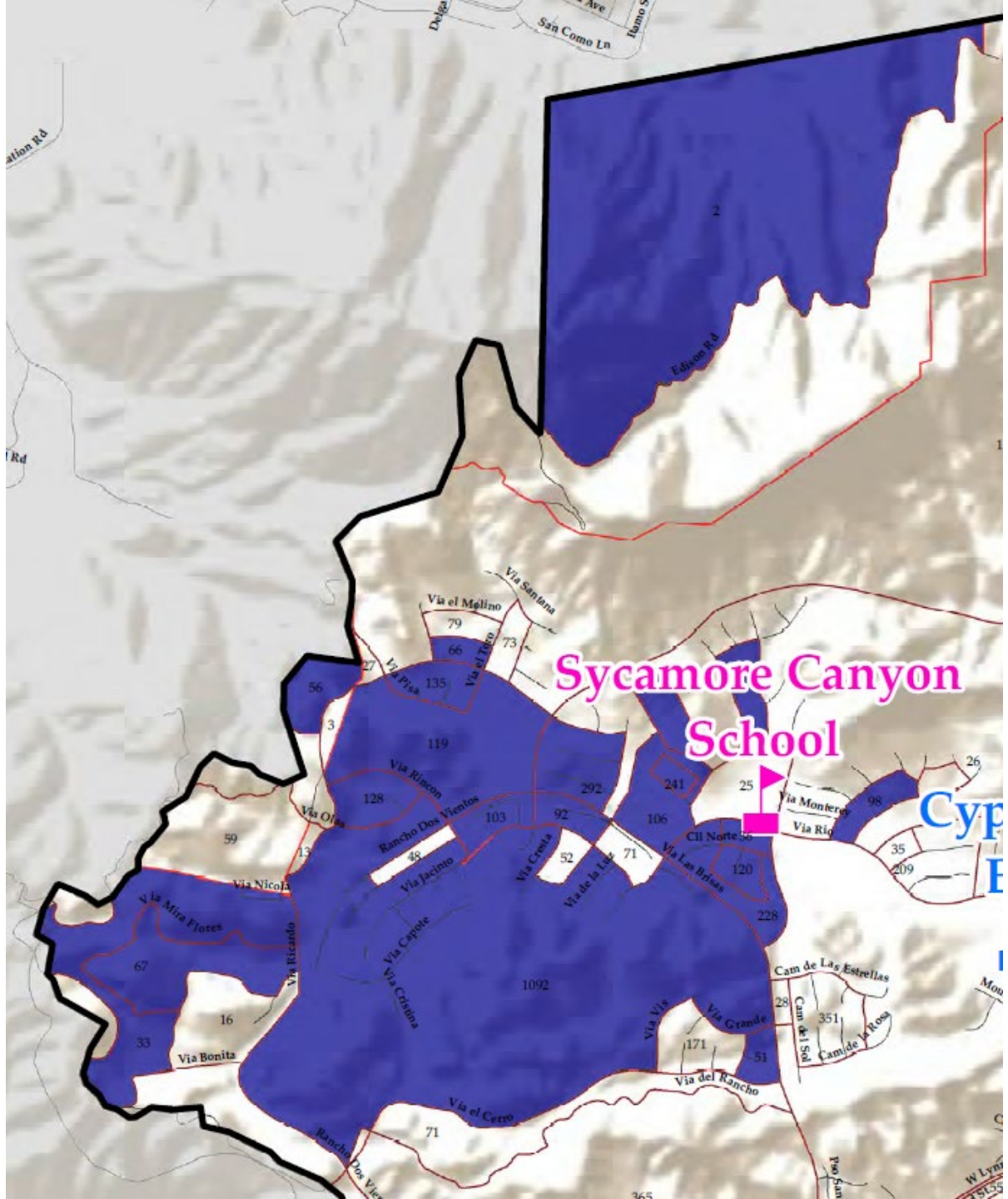
**Conejo Valley  
HS**

**Colina  
MS**

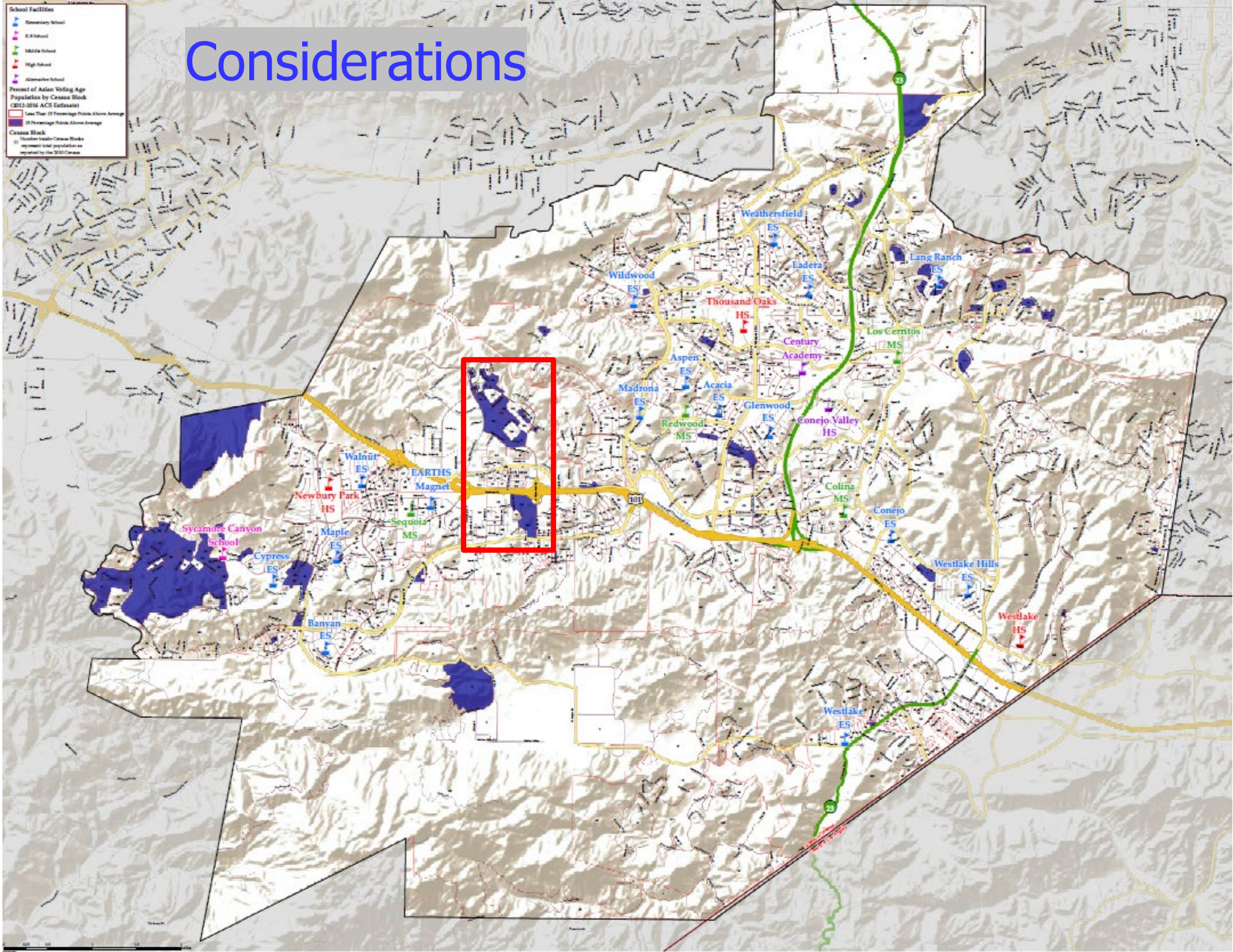
**Conejo  
ES**

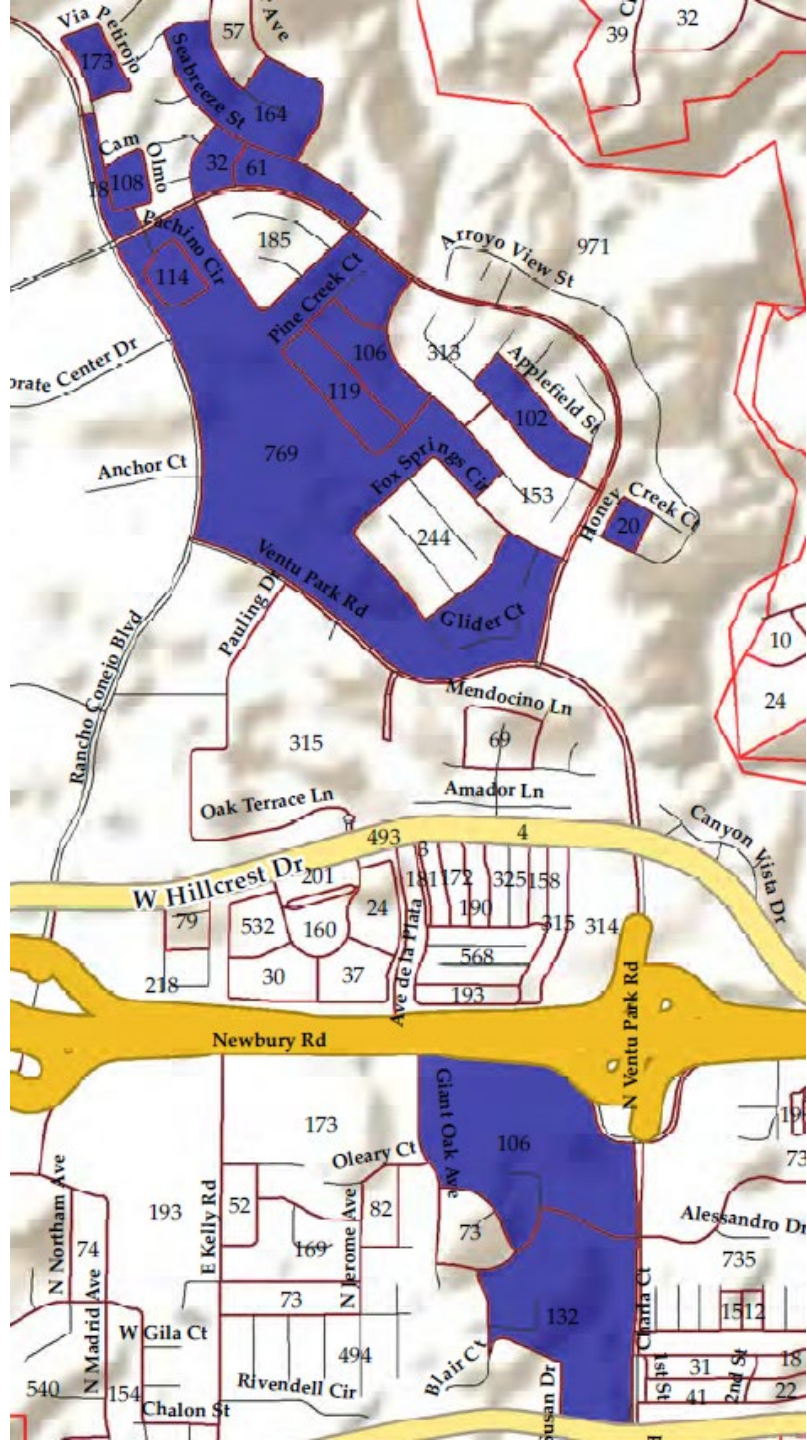
# Considerations





# Considerations





# After Pre-Map Public Hearings

- Draw Draft Trustee Area Plans
  - Demographer to use 2010 Census Data and additionally permitted updated data.
  - Population must be as equal “as is practicable” – people, not citizens.
  - Ed Code section 1002: “...trustee areas shall be as nearly equal in population...”
  - A certain amount of deviation may be permitted.



# More Criteria for Consideration

## Article 21 of the California Constitution:

- Comply with the U.S. Constitution.
- Achieve population equality as nearly as is practicable.
- Comply with the Federal Voting Rights Act.
- Voting districts shall be geographically contiguous.
- Local *communities of interests*.
- Geographical compactness.
- Cannot favor or discriminate against an incumbent, political candidate or political party.



# Final Thoughts

- Does not change overall District boundaries
- Does not change school attendance boundaries
- **Does not** change how the District is governed:
  - Each Board member, regardless of the trustee area in which he/she resides, still owes fiduciary duty to entire District
  - Still one District with common goals and challenges!!!





# Schedule

Tuesday, December 4	Pre-Map Public Hearing #1
Tuesday, December 11, 2018	Pre-Map Public Hearing #2
<i>Draft map options prepared for public review</i>	
Tuesday, January 22, 2019	Map Public Hearing #1
Tuesday, February 5, 2019	Map Public Hearing #2
Tuesday, February 19, 2019	Map Public Hearing #3



